




Smart backup solutions and recovery services for Office 365 and BOX.

Microsoft Office 365 provides companies with numerous applications and services. But backup and protection of your business data it's still your responsibility.

Nowadays success and efficiency depend on availability of resources, effortless and instant access to your data anywhere, from any device and on demand.

With KODO you get the whole package of necessary tools to reach the highest performance and safety requirements of your business workflow.

 Licence per user (mailbox)

Backup Office 365 with KODO

Key features:



Exchange

- Emails
- Contacts
- Calendars/Events



One Drive

- Files



Sharepoint (coming soon)

- Sites



Why you should backup and protect office 365 data?

Data in applications operating in the cloud should be subject to special protection, because they are much more susceptible to:

- human mistakes, both accidental and malicious, including accidental overwriting of data,
- malware or ransomware attacks,
- preventing data loss from expired licenses,
- cloud infrastructure outage.

Leverage your business continuity and data safety with KODO.

Do it in the best way.

KODO for Cloud is a solution that protects your Microsoft Office 365 business data by performing daily backups of OneDrive for Business, Exchange Online to ensure business continuity and to meet compliance demands.

KODO for Cloud ensures not only continued protection of key corporate data, but also compression, deduplication and file versioning. Thanks to its scalable architecture and RESTful API, you get a complete and modern tool that ensures business continuity.


CONTACT: sales@storware.eu

Learn more

Innovative data protection and data backup solutions for endpoint devices – control (the safety) of your business.

Storware KODO for Endpoints is a next generation of enterprise data protection and backup software for Windows and OS X.

KODO protects from the most common reasons for data loss that can endanger your business continuity. Its robust functionalities are fundamental to both IT admins and business users.

  Licence per device and per user

The most common reasons for data loss:

Key features:



Human mistakes (deletions, overwrites of files, programs).



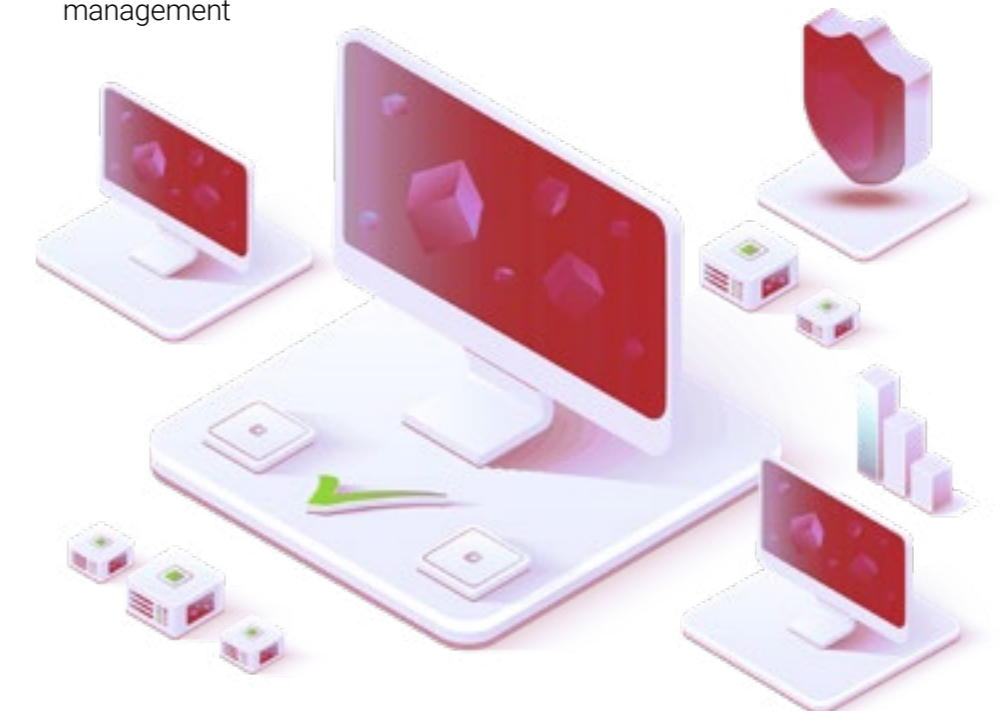
Malware, ransomware attacks.



Theft of the device.



Accidental damage to the device as well as data corruption.



What are end user devices (endpoints)?

All devices used by employees that have access, store and use data of your organization. These can be personal devices (BYOD - bring your own device trend) or the one organization provides them: PCs, laptops. In this case we all agree that data needs to be protected to ensure business continuity.

"According to a recent Juniper Networks Inc. survey, 40% of workers reported using their own mobile devices for both personal and business activities; of those, 80% admitted to accessing their employer's network without permission".

Why KODO is the best choice for your business?

- On-prem setup as Virtual Appliance (or customized installation)
- Deduplication, compression, encryption (in transfer and at rest), versioning
- Agent backup installable with GUI or NON-GUI version on desktop (remote installation and auto deployment supported)
- Scalable solution (based on IBM Spectrum Protect engine)

Devices are replaceable. Data is not.

Whereas organizations are aware of protecting servers and data centers they still seem to ignore the importance of endpoint environment protection. Endpoints are able to carry lots of key corporate data, such as contacts, confidential documents, e-mails and more.

Therefore, the endpoint users require special attention in data security area as the unsecured devices may be the weakest point of the system.

Leverage your business continuity and data safety with KODO.

CONTACT: sales@storware.eu